

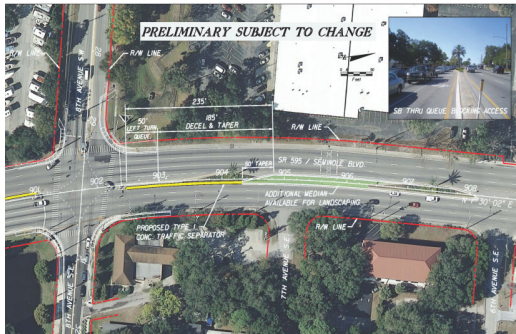
HIGHWAY DESIGN & SURVEYING



RRR Projects
 Widening Projects
 Intersection Design
 Minor Drainage Design
 Surveying and Mapping
 Traffic Operations Design
 Public Involvement
 WMD Permits

ALSTON AVENUE TRAIL FOR THE CITY OF ZEPHYRHILLS

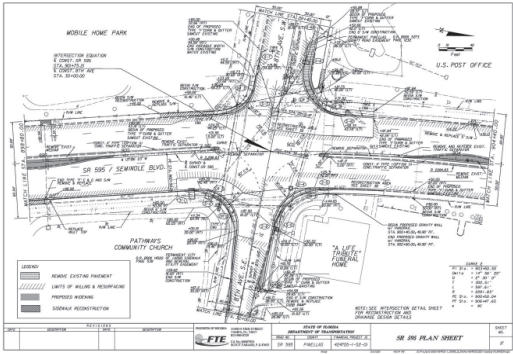
Scope involves the conceptual design of a multi-use trail along Alston Avenue in Zephyrhills. The Trail alignment begins at the City's public sports facilities and ends at "Paw Park" (a public park for dogs and their owners). The design includes a mid-block street crossing in a location designed for trail user's safety by maximizing driver's sight distance of the crossing. A permit exemption was received from SWFWMD. The City constructed the Trail using their labor force, to lower the construction cost.



S.R. 595 (SEMINOLE BLVD) AT 8TH AVENUE - SOUTHBOUND LEFT TURN LANE

SR 595 (SEMINOLE BLVD) AT 8TH AVE INTERSECTION, PINELLAS COUNTY

This was an FDOT District 7 project to remediate pavement and roadside settling resulting from highly organic material and loose soil beneath the pavement. The loose soil was remediated by slurry grouting. Settled and damaged pavement, drainage structures and sidewalk were reconstructed. All sidewalk and curb cut ramps for pedestrian crossings were upgraded to meet current Americans with Disabilities Act (ADA) standards. The Scope also included replacing signal strain poles with mast arms and extending left turn lane lanes on SR 595.



GENERAL PROFESSIONAL ENGINEERING SERVICES, CITY OF COCONUT CREEK

Design including survey and construction engineering services for the replacement of approximately 675 feet of existing asphalt sidewalk with 6-foot wide concrete sidewalk along the west side of NW 42nd Avenue from NW 30th Street to approximately 65 feet south of the bridge, and from there approximately 125 feet of new 6-foot wide concrete sidewalk.



COCHRAN BLVD AND HARBOR SQUARE PLAZA, CHARLOTTE COUNTY

This project included preparing and permitting a set of intersection improvement plans to be used by a contractor to construct the required improvements at the subject intersections. The improvement plans included improvements for, roadway, drainage, signing and pavement markings, signalization, lighting, maintenance of traffic

SR 15 (US 17) WIDENING, RESURFACING & DRAINAGE, PUTNAM COUNTY

The scope of this project included providing a set of construction plans that accurately provided the necessary information and details to mill and resurface the traveled roadway within the prescribed project limits. FTE worked closely with the county and the Florida Department of Transportation to ensure the construction plans were done to suite all requirements and meet all needs.

US 41 (SR 44/45) FROM NORTH OF SR 44/ EAST GULF BLVD. TO LAKE TO CHERRY AVE, CITRUS COUNTY

The scope of this recently awarded project from FDOT District 7 includes milling and resurfacing, bicycle and pedestrian improvements, drainage issues. The project is in downtown Inverness.

DISTRICTWIDE MINOR DESIGN - FDOT 1

FTE worked closely with Charlotte, Sarasota, Polk, Highlands, Manatee, and Lee Counties to provide them with Roadway, Signal, and MOT plans at various intersections which needed improvement within their county. Numerous field reviews were conducted in counties such as Desoto and Manatee to determine the recommended placement of poles, controllers, and traffic signal heads, along with any design feature as required. FTE also provided construction plans for the milling and resurfacing of roads in Lee County. Provided for a right turn lane into Tri-Par Drive and a right turn radius out of Tri-Par Drive. Construction plans were provided for left turn Northbound at Mulford Road. Maximized left turn storage length and provided a left turn / U-turn only island with a median opening.

